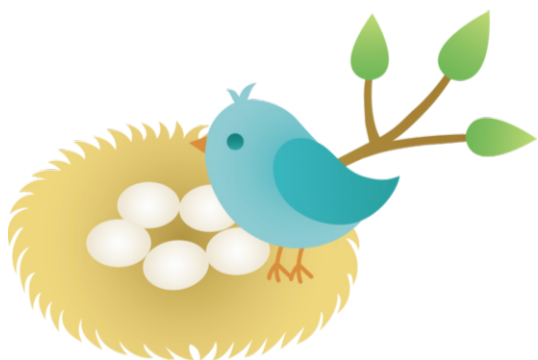


North Jersey Bridge Association (Unit 106)



SPRING SECTIONAL

April 4-6, 2024

Christ Church,
105 Cottage Pl, RIDGEWOOD, NJ

Thursday, Apr 4, \$18 per session

- 10:00 Open Pairs (unlim./4000/2000)
SILVER RUSH 999er PAIRS (1000/500/300)
299er Pairs (300/100/50—no player over 300)
- 2:30 Open Pairs (unlim./4000/2000)
SILVER RUSH 999er PAIRS (1000/500/300)
299er Pairs (300/100/50—no player over 300)

Friday, Apr 5, \$18 per session

- 10:00 Open Pairs (unlim./4000/2000)
SILVER RUSH 999er PAIRS (1000/500/300)
299er Pairs (300/100/50—no player over 300)
0-20 Newcomer Pairs (black points)
- 2:30 Open **IMP** Pairs (unlim./4000/2000)
SILVER RUSH 999er PAIRS (1000/500/300)
299er Pairs (300/100/50—no player over 300)

Saturday, Apr 6, \$45 per person (two sessions, brunch and light meal)

- 10:00 Bagel Brunch
10:30 A/X Swiss Teams (unlim./4000)
Bracketed B Teams (no player over 2500 mps)
Light Meal Served

SILVER RUSH 999er Pairs—no player over 1000

Strats determined by MP average, but no player can exceed event limit.
Strats can be varied depending on attendance.

Bracketed teams – Teams are bracketed by masterpoints and play only in their bracket.

Limited Parking! Carpooling is advised. (Parking map on reverse)

**Silver
Points!**

Tournament Chair

Patricia Rogers Linnemeyer
(551) 427-6753
pateddy@hotmail.com

Need a Partner?

Marty Becker
914-329-1013
mibdds43@yahoo.com

Game Site Phone:

(551) 427-6753

For more information:

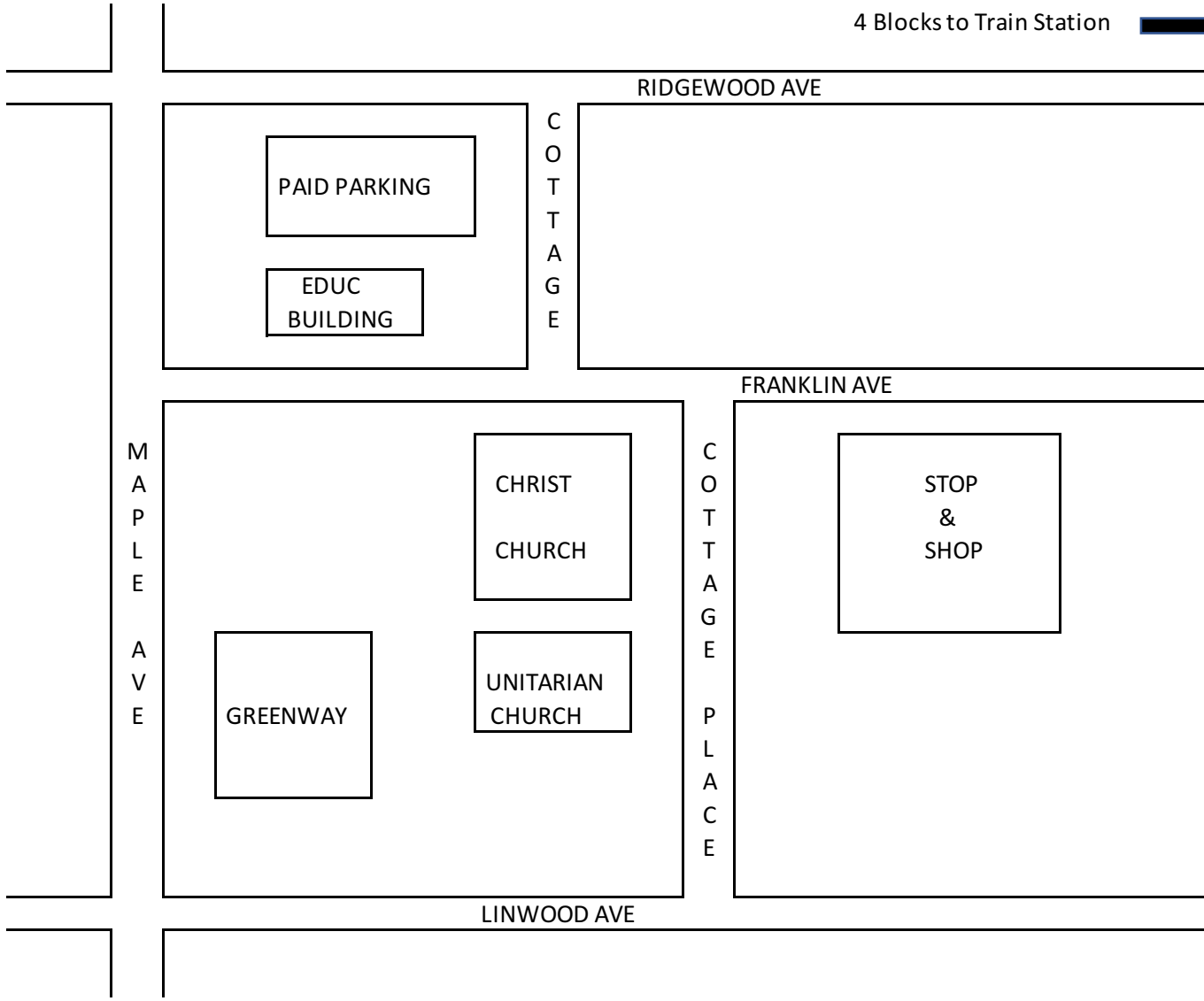
www.bridge-njba.org

Save the Dates!

Unit 106 Sectionals
Aug 23-25, 2024
Nov 8-10, 2024
Ridgewood, NJ

Parking Options - Unit 106 Sectional
 Christ Church, 105 Cottage Place
 Ridgewood, NJ 07450

4 Blocks to Train Station



<u>Location</u>	<u>Allowable Parking Spaces</u>
4 Hr Street Parking - Cottage Place	25
Christ Church (Front & Back Parking)	20
Christ Church (School Side Parking: Sat & Sun)	10
Unitarian Church	7
Stop & Shop (M-F)	20
Stop & Shop (Sat-Sun)	5
Greenway (M-F)	20
Greenway (Sat-Sun)	5
Education Building (Sat-Sun)	35
Paid Parking (Free on Sun)	150 (\$1 an hour)